



# SPARROW HALL

Sparrow Hall is a coed residence hall for SMC upperclassmen. It has 3- and 4-bedroom suites, and while floors are coed, each suite is single-gender. Each bedroom includes a bed, a closet/dresser, and a desk. The building lobby offers a television, ping pong table, couches and chairs. Each floor features a study room with quiet seating, vending machine area, and laundry machines.



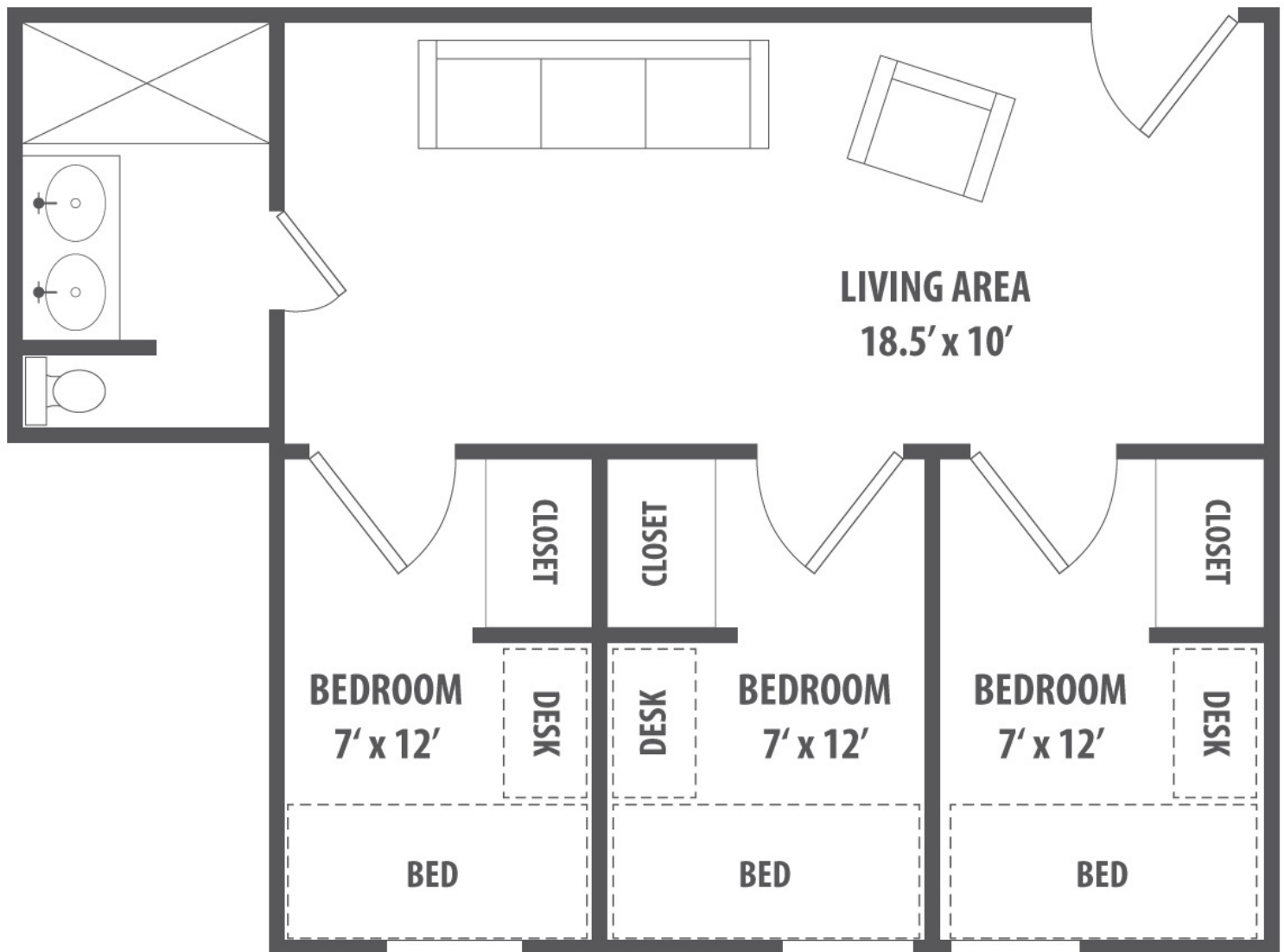
## Sparrow Hall Features:

- 3 stories, 117 beds
- 3-bedroom and 4-bedroom suites
- Elevator
- Vending Machines
- Laundry Facilities
- Keycard access for security
- Quiet study rooms

**X** *experience*  
**COMMUNITY**

[\\_communitylife@smcsc.edu](mailto:_communitylife@smcsc.edu)

## SPARROW HALL | 3-Bedroom Suite



### Measurements

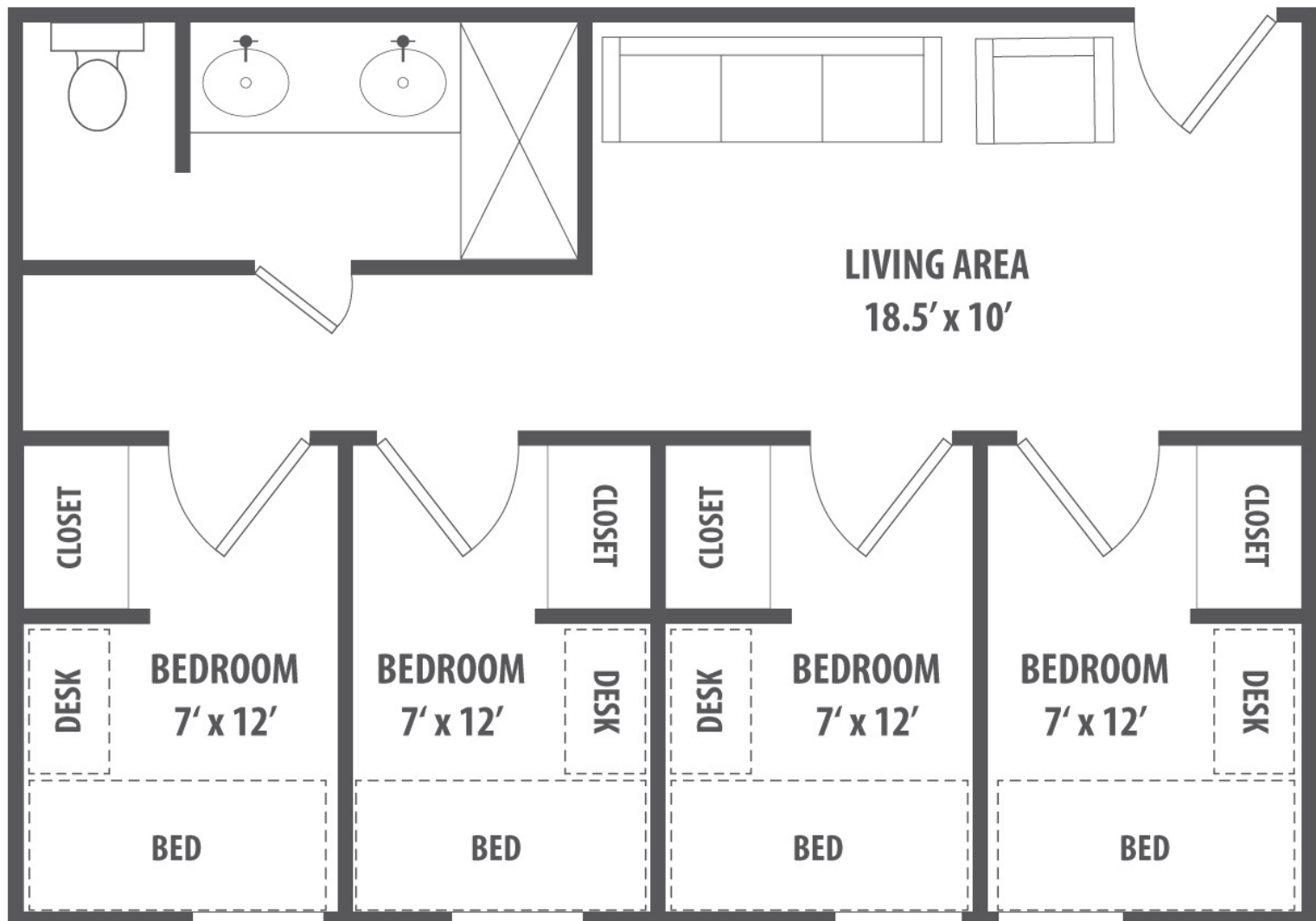
- Desk: 42"W x 30"H x 24"D
- Mattress Size: Twin 75" x 39"
- Storage Under Bed: 80"W x 33"H x 38"D (when bed is at highest setting)
- Dresser: 30"W x 30"H x 24"D
- Closet: 96"H x 72"W x 24"D
- Shower Stall: 34"D x 56"W

### Furnishings

- Bedroom
  - Bed
  - Desk & Chair
  - Dresser
- Living Area
  - Couch
  - Chair
- Tile Floors Throughout



## SPARROW HALL | 4-Bedroom Suite



### Measurements

- Desk: 42"W x 30"H x 24"D
- Mattress Size: Twin 75" x 39"
- Storage Under Bed: 80"W x 33"H x 38"D (when bed is at highest setting)
- Dresser: 30"W x 30"H x 24"D
- Closet: 96"H x 72"W x 24"D
- Shower Stall: 34"D x 56"W

### Furnishings

- Bedroom
  - Bed
  - Desk & Chair
  - Dresser
- Living Area
  - Couch
  - Chair
- Tile Floors Throughout