

SPARTANBURG METHODIST COLLEGE

2016 - 2026 Campus Master Plan



mcmillan | pazdan | smith
ARCHITECTURE



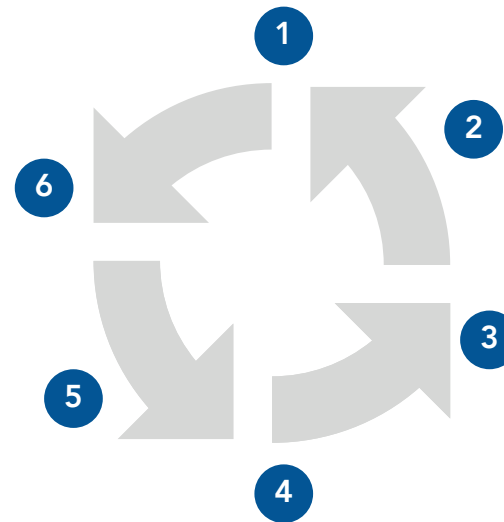
MISSION

The mission of Spartanburg Methodist College, a two-year, coeducational institution related to the United Methodist Church, is to develop the worth and abilities of each individual student through programs relevant to academic and personal needs. The College strives for a values-centered atmosphere in the Christian tradition in which students can develop a sensitivity to the needs of others and from which they can assume responsible positions in society.

The academic program offers students the option of transferring to a four-year college or university for continued study or entering a career after graduation. The curriculum ranges from the basic liberal arts and transfer program to preparation for immediate entry into the job market through career track programs. The College offers to a wide variety of students the opportunity of higher education by providing a competent and dedicated faculty, financial assistance, work-study positions, and special support programs.

MASTER PLANNING PROCESS OUTLINE

- 1 PROJECT INITIATION
- 2 DATA COLLECTION
- 3 ANALYSIS & OPTIONS
- 4 CONCEPT REFINEMENT
- 5 DOCUMENTATION & INTEGRATION
- 6 PRESENTATION & PUBLICATION



OPEN WORKSHOPS



APRIL 6



APRIL 13

MASTER PLAN COMMITTEE



APRIL 27



JULY 13



MAY 11



AUGUST 10



JUNE 12



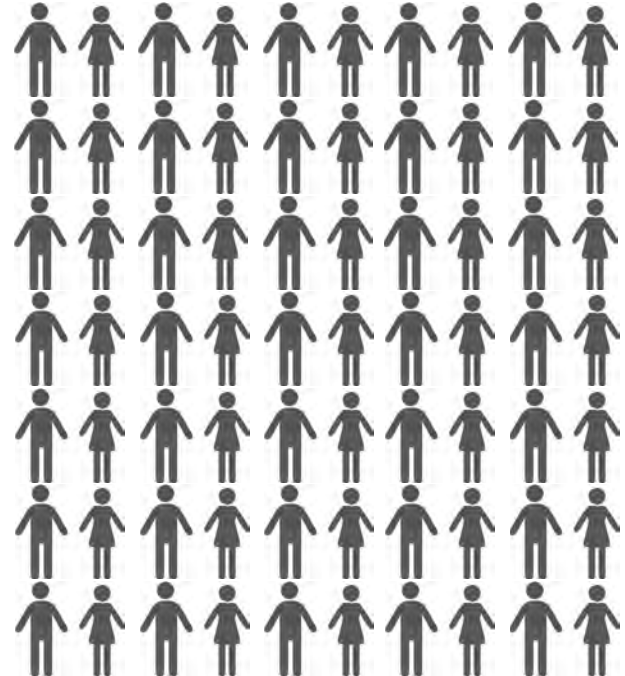
SEPTEMBER 14

BOARD OF TRUSTEES



OCTOBER 20

+ 70 PARTICIPANTS (FACULTY & STAFF)





MASTER PLAN COMMITTEE

- Scott Cochran | President
- Tim Wallace | Athletic Director & Head Baseball Coach
- Wells Shepard | Enrollment
- Chris Roberson | Financial Aid
- Trina Gilliam | Director of Student Conduct
- Ben Sloop | Math Professor
- Cherly Somerset | Administrative Assistant
- Eric McDonald | VP of Business
- Ann Bowles | VP, Academic Affairs & Student Development
- Courtney Shelton | VP, Professional Development
- Jennifer Dillinger | VP, Institutional Advancement
- Marty Woods | Director, Facilities
- Trey Arrington | Executive Director, Technology
- Harry Bayne | English Professor
- Teresa Ferguson | Chief, Campus Police
- Lisa Ware | VP, Marketing
- Penny Fisher | Chair, Board of Trustees
- John Moore | Trustee
- Jacob Noland | Student Representative
- John Ramsey | Trustee
- James Fletcher Thompson | Trustee
- Kris Neely | Professor of Art
- Candice Sloan | Chaplain

PRIMARY CATEGORIES OF FOCUS



ACADEMIC LIFE



ATHLETIC LIFE



CAMPUS INFRASTRUCTURE



RESIDENTIAL LIFE



COMMUNITY LIFE



CAMPUS LANDSCAPING



STUDENT LIFE



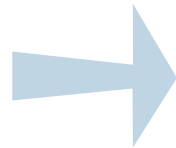
PARKING & CIRCULATION



WAYFINDING/SIGNAGE

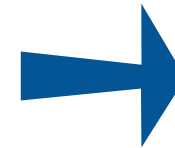
2006

PAST



2016

PRESENT



2026

FUTURE



3

ANALYSIS & OPTIONS



CAMPUS BUILDING STUDY



3

ANALYSIS & OPTIONS



CAMPUS BUILDING STUDY



3

ANALYSIS & OPTIONS



CAMPUS BUILDING STUDY



MASTER PLAN PHASING



IMPACT PROJECTS

1. Campus Walking Trail/ Define Campus Boundary
2. Entry Signage
3. Enhanced Streetscape
4. Amphitheater
5. Modify Perimeter Wall Around Chapel

MAJOR PROJECTS

1. New Student Center/ Outdoor Plazas/ Entry Feature
2. Renovate Montgomery Science Center & Repurpose Burgess
3. Renovation of Moore Gymnasium and Relocation of Maintenance/Facilities

5. Athletic Field House/Pressbox
6. Athletic Field Improvements (Soccer)
7. New Residence Hall/ Outdoor Plazas
8. Relocate Tennis Courts/ Add Intramural Fields
9. Softball/Tennis Field House
10. Repurpose/Renovate Willard Hall
11. Repurpose/Renovate Hammond Hall
12. Burgess Library Renovation/Improvements
13. Camak Auditorium Renovation/Improvements

4

CONCEPT REFINEMENT

STUDENT CENTER, ENTRY FEATURES, & OUTDOOR PLAZAS



4

CONCEPT REFINEMENT

STUDENT CENTER, ENTRY FEATURES, & OUTDOOR PLAZAS



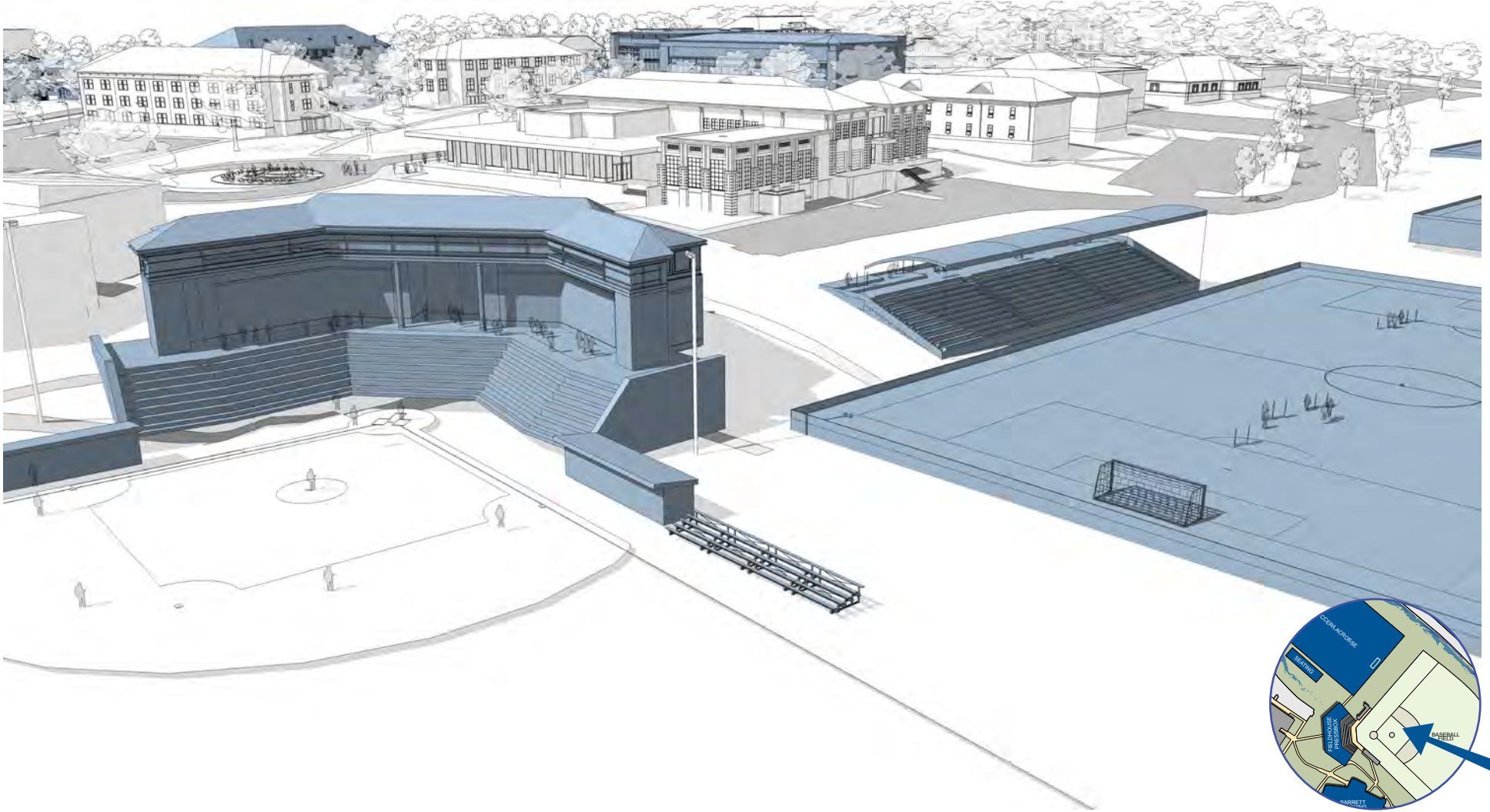
4

CONCEPT REFINEMENT

STUDENT CENTER, ENTRY FEATURES, & OUTDOOR PLAZAS



ATHLETIC PRESSBOX/FIELDHOUSE & FIELD IMPROVEMENTS



4

CONCEPT REFINEMENT

NEW RESIDENCE HALL & OUTDOOR PLAZAS



SOFTBALL & TENNIS FIELDHOUSE/TENNIS COURTS

